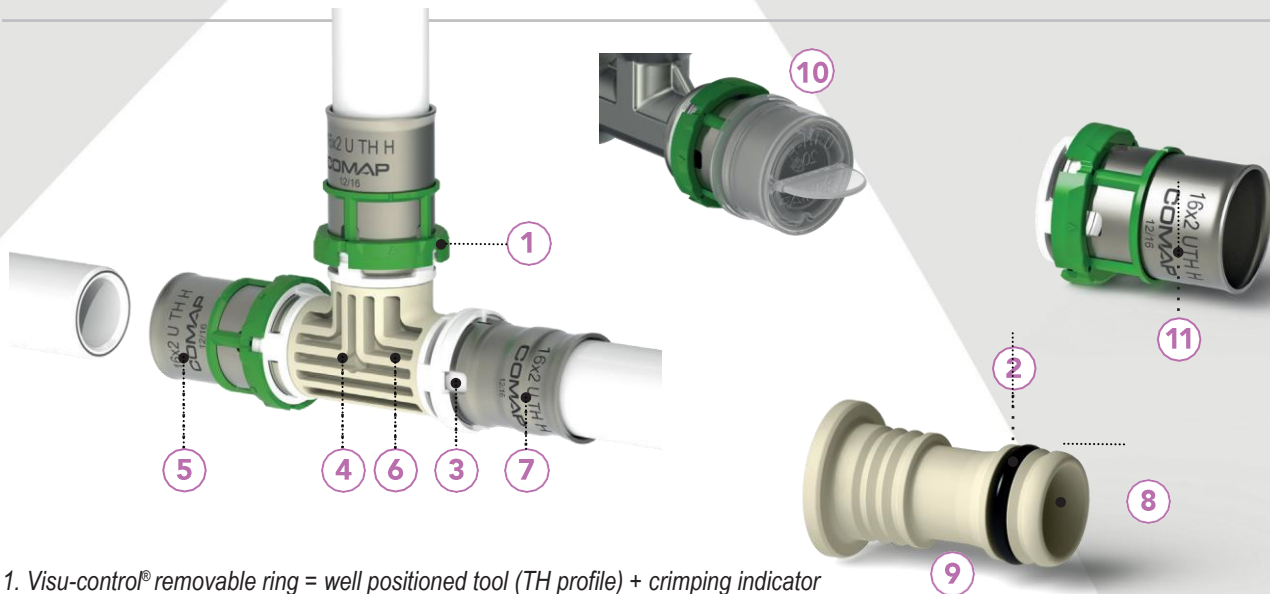




SYNTHETIC CRIMP FITTINGS FOR MULTILAYER PIPE

COMAP



1. Visu-control® removable ring = well positioned tool (TH profile) + crimping indicator
2. O-ring in EPDM with the no crimp, no seal function
3. Viewing window = the guarantee that a pipe has been properly inserted
4. Body in PPSU = meets EU standards
5. Stainless steel casing = very high resistance to corrosion
6. Design with flow line = for all-round durability
7. Multiprofile = TH, H and U connector compatible with different tool brands
8. Improved hydraulics = lower pressure losses
9. Stay = maintains pipes in place once fittings are crimped during insertion of pipe in fitting
10. Protective cap = protects fittings during transport and protects O-rings from impurities
11. Laser marking = guarantee of legible and indelible information for product traceability

DESCRIPTION

The COMAP compression system for multilayer pipe combines all the qualities of plastic and metal solutions. A light and flexible tube with significant resistance to expansion (inner layer of aluminium). A high quality synthetic PPSU fitting, quick to install and secured by a removable crimp indicator.

Synthetic crimp fittings are provided with EPDM O-rings and feature the no crimp, no seal function (if a fitting is not crimped, it allows water to pass through or pressure drops where pressure tests are carried out using air).

ADVANTAGES

Performance

- Crimping solution allows connecting a fitting in seven seconds and avoids the risks related to the welding.
- Crimp fittings compatible with TH, H and U profiles, with different tool brands
- Improved hydraulics with a reduction of pressure losses of 14% on average compared to former products

Safety

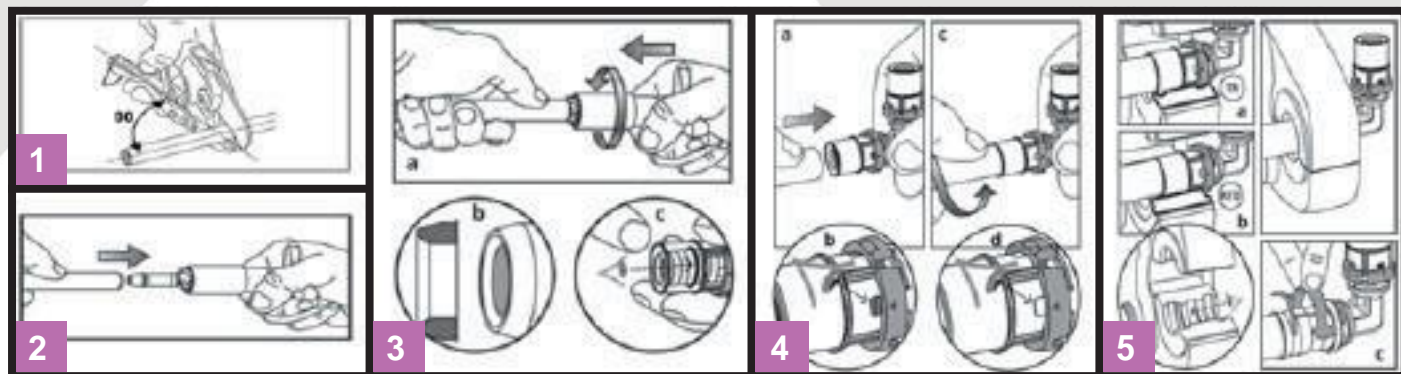
- Removable Visu-Control® ring, allowing visual and tactile control of a crimp
- The "no crimp, no seal" technology: if not crimped the connection allows water to pass during pressure tests
- Protective cap to prevent impurities from penetrating



SYNTHETIC CRIMP FITTINGS FOR MULTILAYER PIPE

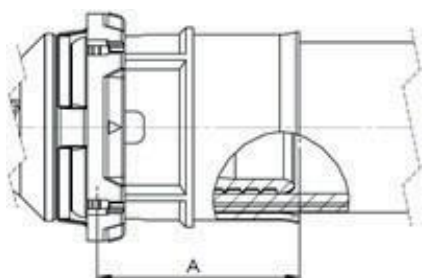
COMAP

INSTALLATION



1. CUT

Make a 90° cut on the pipe with a pipe cutter (1). Don't forget to add the length of the pipe that is situated inside the fitting in your calculation (Dimension A).



Pipe diameter (in mm)	16	20	26	32
A (mm)	24	24	25	29

2. CALIBRATE

Use a COMAP calibration tool to return the pipe to its cylindrical shape after the cut (2).

3. DEBURR

Deburr (3a) and visually check that the edges of the pipes are clean and beveled to avoid damaging the seal located inside the fitting (3b). Make sure that the O-ring is properly seated in the fitting (3c).

4. ASSEMBLE

Insert the pipe into the fitting (4a), rotating it slightly and pushing lengthwise until it stops (4c).

Ensure that the tube is correctly inserted by viewing the insertion display window (4b and 4d)

5. CRIMP

Before crimping, check that there are no impurities in the jaws and crimp chains. Also check that you use the correct jaws and crimp chains and that they correspond to the fittings used.

If using a jaw with a TH profile, position the jaw on the Visu-Control® ring (5a).

With an H or U jaw, position the jaw against the Visu-Control® ring (5b).

After crimping, remove the Visu-Control® ring (5c).



SYNTHETIC CRIMP FITTINGS FOR MULTILAYER PIPE

COMAP

APPLICATIONS

Table of applications of COMAP compression fittings for multilayer pipes.

Application	Description	Operating temperature	Maximum operating pressure
Sanitary water	Hot and cold drinking water systems	5°C to 95°C	10 bar
Heating and cooling	For water heating systems and networks	-10°C to 95°C	10 bar
Rainwater	For rainwater evacuation systems in buildings	-10°C to 95°C	10 bar
Compressed air	For oil-free compressed air systems * (with oil filter in front of the system).	-10°C to 70°C	10 bar

*Less than 25mg/m³ of oil

Or any other application, please contact COMAP.

WARRANTY AND CERTIFICATIONS

COMAP compression fittings are warranted to be free from defects in material and workmanship for a period of 10 years from the date of purchase. They can only be used with COMAP multilayer pipes.

Warranty subject to conditions. Please contact your COMAP representative for our detailed warranty conditions.

Certification:

